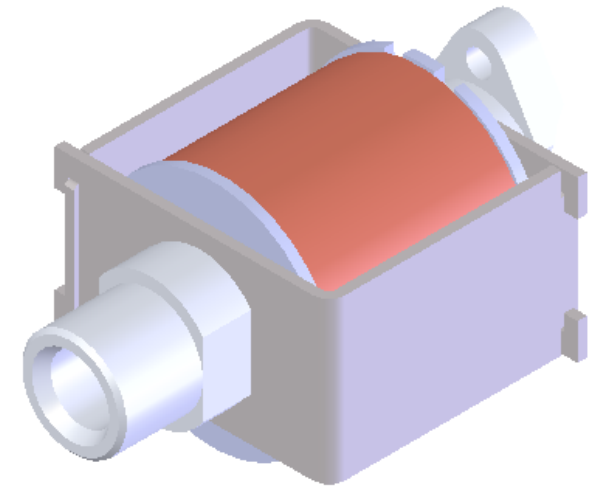


This drawing is the sole property of SHUKOS COMPONENTS LIMITED.
 The information illustrated and disclosed herein is confidential to and proprietary to SHUKOS COMPONENTS LIMITED.
 No use of the information illustrated and disclosed herein or making of a reproduction hereof without the express written permission of SHUKOS COMPONENTS LIMITED is permitted.

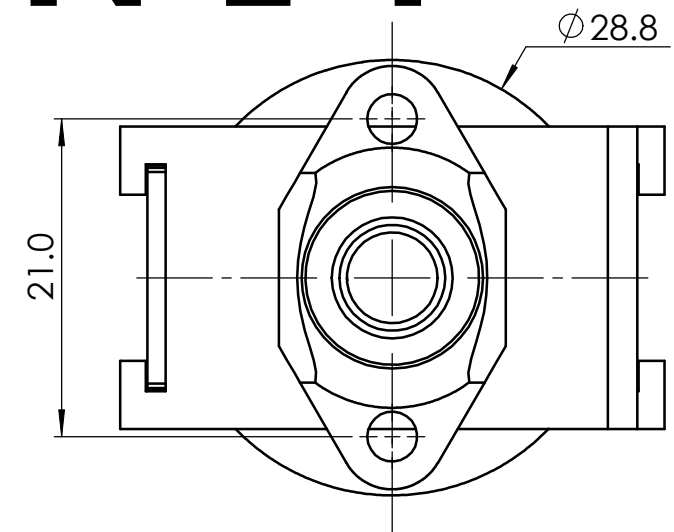
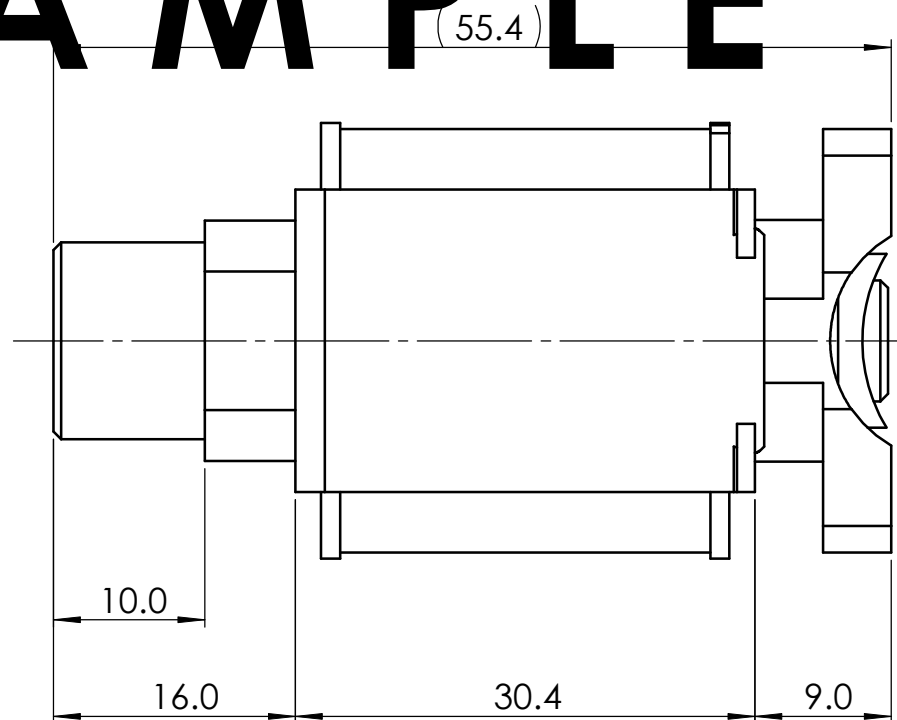
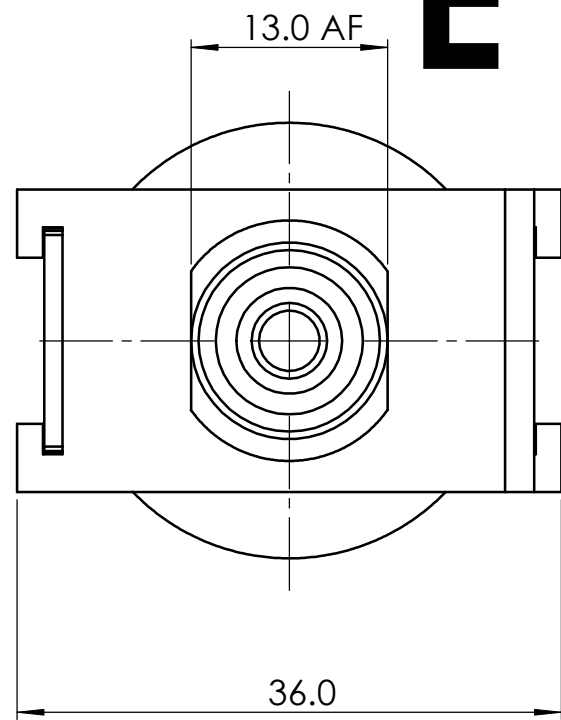
Samples must be approved before quantity production starts.

SPECIFICATION TABLE

1	Gas Type	Non-aggressive dry gases e.g. Air; LP and Natural combustible gases.
2	Max Inlet Pressure	7 kPa
3	Maximum Voltage	30 VDC
4	Maximum Electric Power	6 W
5	Operating Current	50...200 mA
6	Winding Resistance at 20°C	135±5 Ohm
7	Max Flow Output on Dry Air at 1 kPa	5.0 or more
8	Min Flow Output on Dry Air at 1 kPa	0.2 or less
9	Maximum Operating Temperature	105°C
10	Weight (approximately)	155 g
11	Inlet Fitting	Saddle Type Mounting over Manifold Tube of custom diameter. Hole Ø in the manifold tube is custom. Threaded holes for the clamp are custom.
12	Outlet Fitting	Aluminium tube and nut assembly. Outlet thread is custom. Compression of the swaged olive joint with nut.
13	Winding Termination	Flying leads



EXAMPLE ONLY



ISSUE	CH. NO.	MODIFICATION	CHKD	DATE	ISSUE	CH. NO.	MODIFICATION	CHKD	DATE
					A		Released for web publishing	KS	16.02.12

Unless otherwise specified :-
 All dimensions are in mm.
 Tolerances :
 Linear 0 ±0.4
 0.0 ±0.25
 0.00 ±0.15
 0.000 ±0.05
 Angular ±0.5°
 Concentricity 0.12 T.I.R
 A.Q.L.
 REMOVE ALL BURRS

Material specification	Drawn
MATERIAL	GE
Finish	Date
	16 FEB 12
	Checked
	KS
	Approved
	KS

SHUKOS COMPONENTS LIMITED®

GAS VALVE 008G

Sheet 1 of 1

Scale 2:1 Drawing number 008GWEBSAMP A3

Drawing number 008GWEBSAMP © 2012 Copyright SHUKOS COMPONENTS LIMITED®